

STREET TREES—SOUTH FRONT STREET
 REQUIRED = 1 / 30' * 296.24' = 9.87, 10 TREES
 PROVIDED = 11 TREES
 *SEE LANDSCAPE PLAN FOR PROVIDED TREES

STREET TREES—GREENFIELD STREET
 REQUIRED = 1 / 30' * 248.00' = 8.27, 8 TREES
 PROVIDED = 8 TREES
 *SEE LANDSCAPE PLAN FOR PROVIDED TREES

STREET TREES—SOUTH SECOND STREET
 REQUIRED = 1 / 30' * 184.74' = 6.16, 6 TREES
 PROVIDED = 6 TREES
 *SEE LANDSCAPE PLAN FOR PROVIDED TREES

FOUNDATION PLANTING—NORTH SIDE OF BUILDING #1
 REQUIRED AREA = [150.10' x (20' + 5')] x 0.12 = 450.30 SF
 PROVIDED AREA = 454.54 SF
 *SEE LANDSCAPE PLAN FOR PROVIDED PLANTINGS

FOUNDATION PLANTING—WEST SIDE OF BUILDING #1
 REQUIRED AREA = [(120.17' x (20' + 5')) + (120.17' x 5' x 0.5)] x 0.12 = 396.56 SF
 PROVIDED AREA = 426.19 SF
 *SEE LANDSCAPE PLAN FOR PROVIDED PLANTINGS

FOUNDATION PLANTING—SOUTH SIDE OF BUILDING #1
 REQUIRED AREA = [150.30' x (20' + 5')] x 0.12 = 450.90 SF
 PROVIDED AREA = 401.34 SF
 *SEE LANDSCAPE PLAN FOR PROVIDED PLANTINGS

FOUNDATION PLANTING—EAST SIDE OF BUILDING #1
 REQUIRED AREA = [(120.17' x (20' + 5')) + (120.17' x 5' x 0.5)] x 0.12 = 396.56 SF
 PROVIDED AREA = 401.34 SF
 *SEE LANDSCAPE PLAN FOR PROVIDED PLANTINGS

FOUNDATION PLANTING—WEST SIDE OF BUILDINGS #2 & 3 COMBINED
 REQUIRED AREA = 4,822 x 0.12 = 578.64 SF
 PROVIDED AREA = 579.36 SF
 *SEE LANDSCAPE PLAN FOR PROVIDED PLANTINGS

INTERIOR SHADING

PARKING FACILITY AREA
 (PARKING LOT AREA TO BACK OF CURB OR BACK OF SIDEWALK ADJACENT TO PARKING SPACES/DRIVE AISLES EXCLUDING LANDSCAPING AREAS = 39,798 SF
 REQUIRED INTERIOR SHADING IS = 0.2 X 39,798 = 7,959.60 SF
 INTERIOR SHADING PROVIDED = 8484
 8 Live Oaks x 707 = 5656
 3 Yoshino Cherry x 707 = 2121
 2 Yoshino Cherry x 353.50 = 707

ALL PROPOSED VEGETATION WITHIN SIGHT TRIANGLES SHALL NOT INTERFERE WITH CLEAR VISUAL SIGHT LINES FROM 30' TO 10'.

STREET TREE PLANTINGS IN BELOW-GRADE PLANTERS SHALL BE INCLUDED IN THE PUBLIC RIGHT-OF-WAY AT THE RATE OF (1) TREE PER THIRTY (30) FEET OF FRONTAGE.

Tree Grates Notes
 Tree grates to be ADA compliant.
 Color to be uniform throughout the project.
 Tree Grates to be KBI FLEXI PAVE #6
 Tree grates to be 1' from edge of brick to provide a sidewalk corridor.

Tree Grates — see notes

INTERIOR LANDSCAPING ISLANDS			
LANDSCAPE ISLAND	TOTAL AREA (SF)	IMPERVIOUS AREA (SF)	PERCENT IMPERVIOUS
LI-1	226.03	0.00	0.00
LI-2	217.08	0.00	0.00
LI-3	216.22	0.00	0.00
LI-4	221.50	0.00	0.00
LI-5	220.61	0.00	0.00
LI-6	218.54	0.00	0.00
LI-7	217.41	0.00	0.00
LI-8	436.17	0.00	0.00
LI-9	435.92	0.00	0.00
LI-10	430.80	0.00	0.00
LI-11	218.91	0.00	0.00

For each open utility cut of City streets, a \$325 permit shall be required from the City prior to occupancy and/or project acceptance.



DESIGN SOUTH

GREENFIELD COMMERCIAL
 WILMINGTON TOWNSHIP NEW HANOVER COUNTY NORTH CAROLINA

LANDSCAPE PLAN
 DRAWN BY: DONNA CLEMMONS
 Landscape Architect/Asst Associate
 Wrightsville Beach, N.C.
 Phone 910-612-9538

Owner: GREENFIELD STREET PROPERTIES, LLC
 10 S. CARDINAL DRIVE
 WILMINGTON, NORTH CAROLINA 28403
 PHONE: 910-251-5030

DATE:	Revised:
4.27.17	7.7.17
	7.14.17
	7.20.17
	7.21.17

SCALE:
 1" = 20'

SHEET : L1

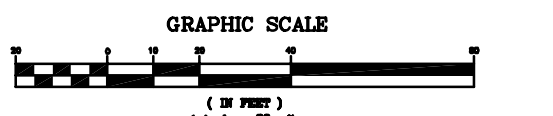


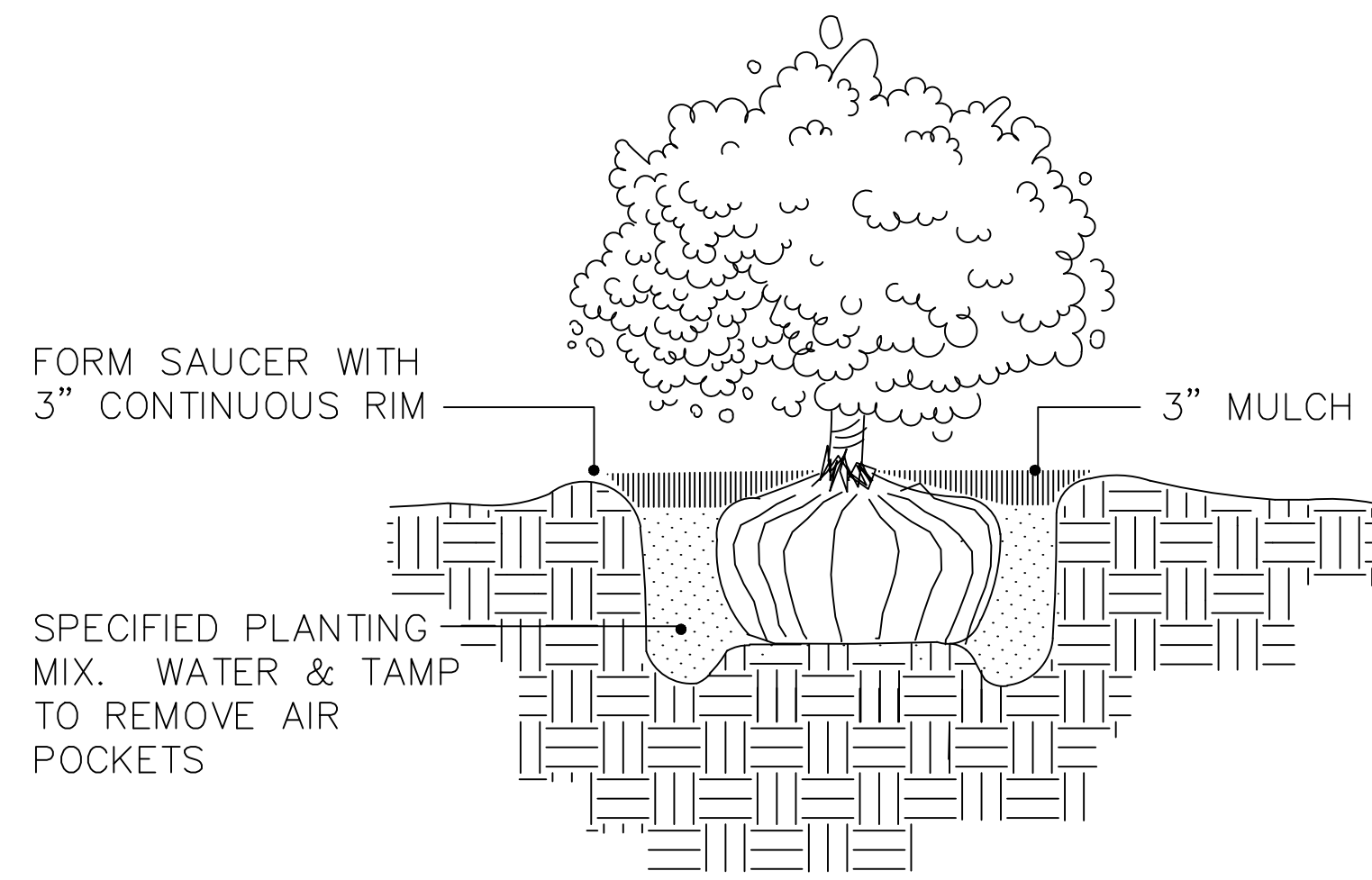
Public Services • Engineering Division
APPROVED STORMWATER MANAGEMENT PLAN

Date: _____ Permit # _____

Signed: _____
 Approved Construction Plan

Name _____ Date _____
 Planning _____
 Traffic _____
 Fire _____



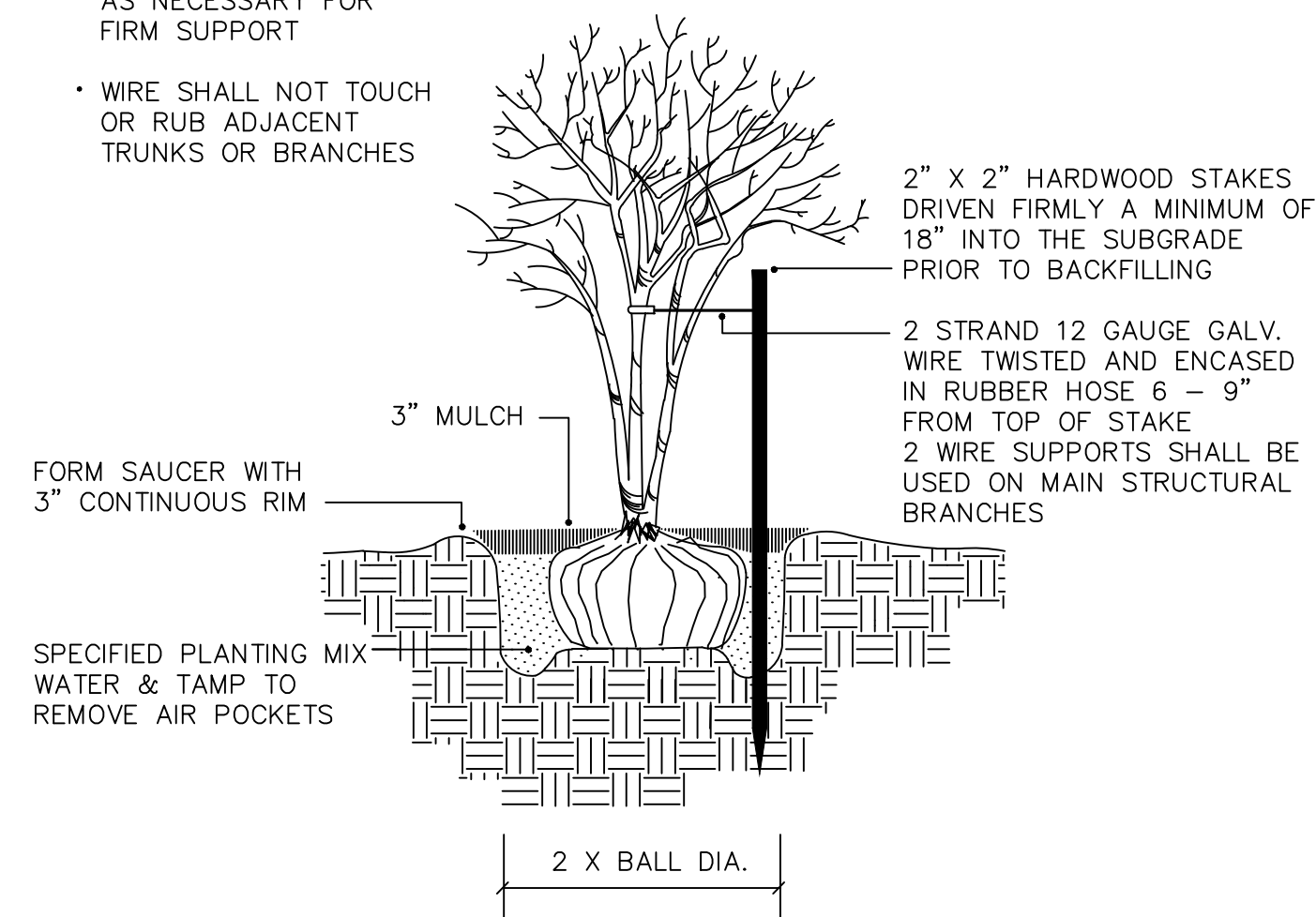


SHRUB PLANTING

SCALE: NOT TO SCALE

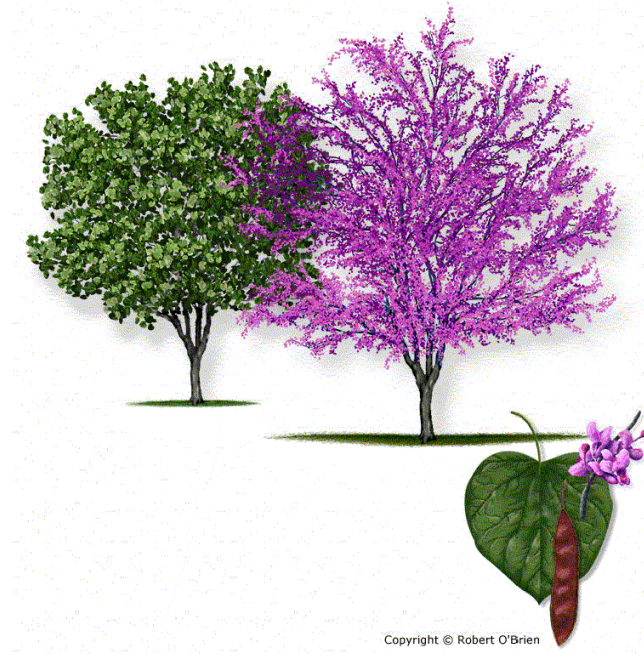
NOTE:

- STAKE TO FIRST BRANCHES AS NECESSARY FOR FIRM SUPPORT
- WIRE SHALL NOT TOUCH OR RUB ADJACENT TRUNKS OR BRANCHES



MULTI-TRUNK TREE STAKING

SCALE: NOT TO SCALE



Cercis canadensis – 'Oklahoma'
Front Street & Second Street

GREENFIELD COMMERCIAL

Plant Table

Trees

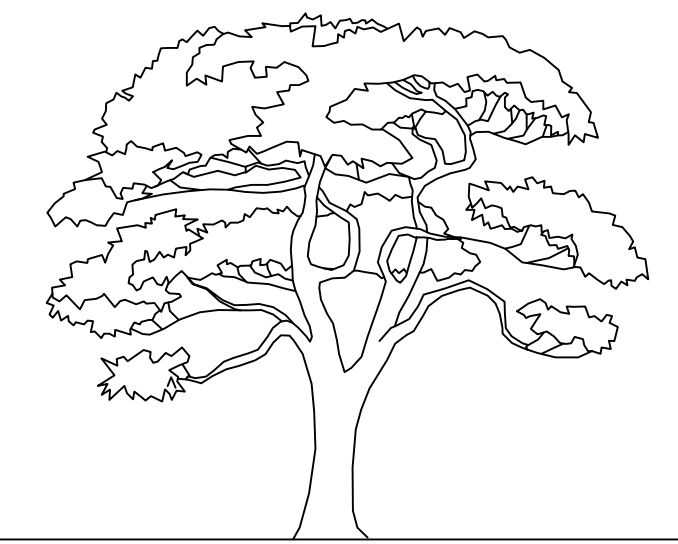
Quantity	Symbol	Scientific Name	Common Name	Planting Size
13		Prunus yedoensis	Yoshino Cherry	2.5"
17		Cercis candensis "Oklahoma"	Purple oklahoma redbud	10'
8		Quercus virginiana	Southern live oak	2.5"

Broadleaf Evergreen

Quantity	Symbol	Scientific Name	Common Name	Planting Size
25		Camellia sasanqua –dwarf	"Shi Shi gasher"	3'
21		Podocarpus 'maki"	Maki yew	3'
47		Liriope muscari	Big blue lily turf	1 gal
235		Trachelospermum asiaticum	Asian jasmine	1 gal

Palm

Quantity	Symbol	Scientific Name	Common Name	Planting Size
44		Sabal minor	Dwarf palmetto	3'
18		Illicium floridanum	Anise shrub	3'



DESIGN SOUTH

GREENFIELD COMMERCIAL
WILMINGTON TOWNSHIP NEW HANOVER COUNTY NORTH CAROLINA

LANDSCAPE PLAN
DRAWN BY: DONNA CLEMMONS
Landscape Architect/Asla Associate
Wrightsville Beach, N.C.
Phone 910-612-9538

Owner: GREENFIELD STREET PROPERTIES, LLC
10 S. CARDINAL DRIVE
WILMINGTON, NORTH CAROLINA 28403
PHONE: 910-251-5030

DATE: 4-27-17
Revised: 7.7.17
Revised: 7.14.17
Revised: 7.20.17
Revised: 7.21.17

SCALE:
1" = 20'

SHEET : L2

Landscape notes:

Contractor shall locate all underground utilites and coordinate with all other trades on site.

All plants shall conform to or exceed the standards for nursery stock as published by the American Association of American Nurserywomen and men.

The site shall be acceptable for landscaping when the grade is established and areas provide positive drainage.

IRRIGATION NOTES:

Coordinate with construction to put sleeving for irrigation under parking and sidewalk areas before concrete is poured.

All foundation plantings to be drip irrigated on a common timer.

Backflow preventer shall conform to the City of Wilmington for common water supply.

All components of irrigation system shall conform to the manufacturers guidelines including: sedimentation filters, wire gauge, valves and backflow preventers.

For each open utility cut of City streets, a \$325 permit shall be required from the City prior to occupancy and/or project acceptance.

City of WILMINGTON NORTH CAROLINA
Public Services • Engineering Division
APPROVED STORMWATER MANAGEMENT PLAN
Date: _____ Permit # _____
Signed: _____

Approved Construction Plan
Name _____ Date _____
Planning _____
Traffic _____
Fire _____

KEYNOTE LEGEND	
KEY VALUE	KEYNOTE TEXT
E1	STEEL CONTAINER EXTERIOR
E2	BRICK VENEER
E3	RECLAIMED WOOD SIDING
E4	CORRUGATED METAL WALL PANEL A7.2 STANDARD DETAILS-RUN HORIZONTAL AT ELEVATOR WALLS AND ELEVATOR MACHINE ROOM
E6	BLACK ANODIZED ALUMINUM STOREFRONT
E11	ROOF TOP EQUIPMENT BEYOND
E15	LIGHT FIXTURE PER SCHEDULE
E17	HANDRAIL GUADRAIL, FENCINGS, GATES
E18	STEEL GUARD/HANDRAIL WITH STEEL WIRE FABRIC INFILL. SEE DETAILS ON A7.1
E19	EMERGENCY OVERFLOW SCUPPER 03/A9 01
E20	BLACK ALUMINUM OUTSIDE CORNER TO MATCH STOREFRONT ALUMINUM AND COLOR
R16	PLAZA PAVER SYSTEM (HYDROTECH) PAVERS, PEDESTALS, RIGID INSULATION, WATERPROOF MEMBRANE, TRIM, WATER CUTOFFS ETC. WITH ROOF DRAINS- EXTEND EACH DRAIN WITH 4" PVC LEADER IN WALL TO BELOW GRADE STORM WATER PIPING. SEE A9.02 FOR DETAILS
W2	METAL FLAT/SMOOTH PANEL PER SCHEDULE A7.2 FOR DETAILS

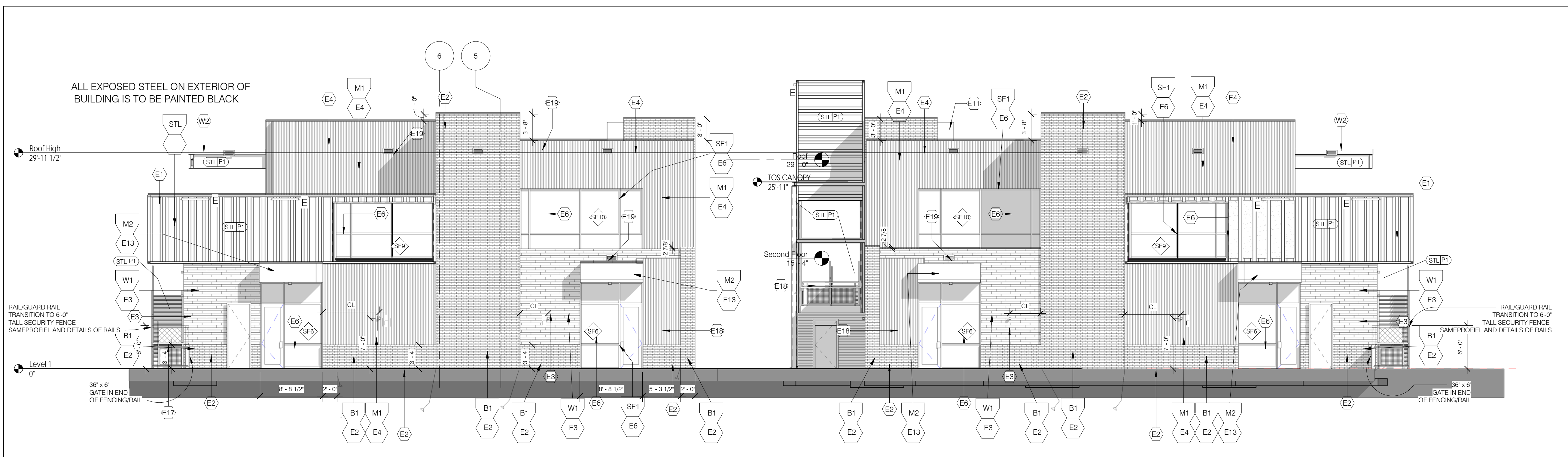
GENERAL LEGEND	
	EXPANSION JOINT IN WALL 3/8" NEOPRENE AND CAULK FULL HEIGHT
	WINDOW TYPE: ELEVATIONS A2.0 & A2.1 FOR CALL OUTS - SEE A6.0 FOR DETAILS

EXTERIOR LIGHT FIXTURE SCHEDULE	
'A'	LUMENBEAM - W/6 DEG MOUNT IN CONCRETE AT GRADE. MANUFACTURER LUMENPULSE
'B'	BEGA 6977 7.9 W LED
'C'	BEGA 44 439 21.1 w led 24- SURFACE MOUNTED DOWNLIGHT LINEAR BLACK
'D'	WAC LIGHTING PD-W2605 BK
'E'	LUMENFACADE - BY LUMENPULSE LOG/120/36/30K/10X60/WAM2/BK
'F'	WAC LIGHTING WS-W2505 B2 RUBIX WALL MOUNT

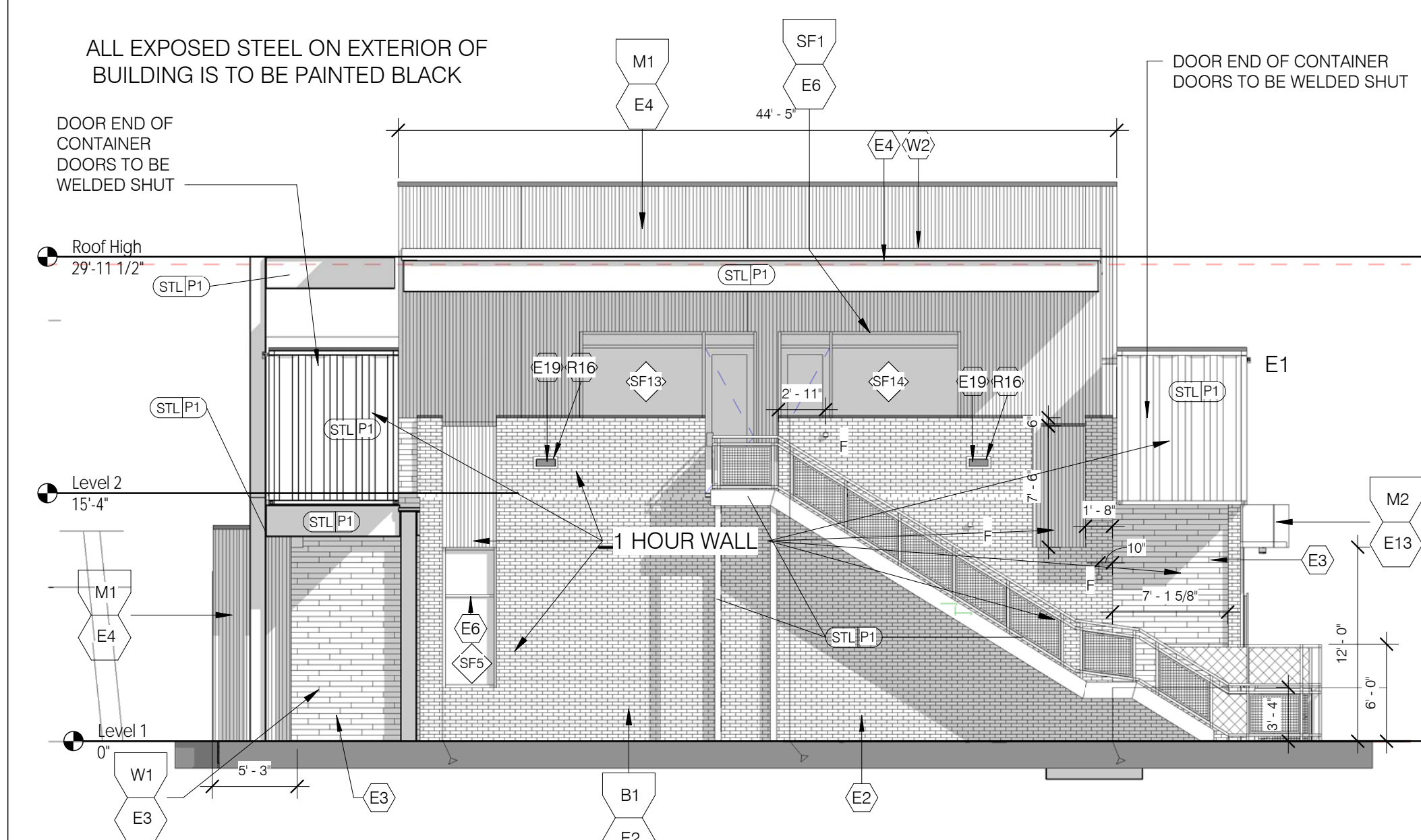
INTERIOR LIGHTING TO BE INSTALLED AT TIME OF FUTURE FIT-UPS

MATERIALS / EXTERIOR FINISHES	
BRICK	- MODULAR - RECLAIMED TUMBLED- MORTAR TO MATCH BRICK COLOR
METAL COLORS	M1 - GREY CORRUGATED METAL M2 - FLAT/SMOOTH METAL PANEL - COLOR TBD
PAINT COLORS	P1 - SHERWIN WILLIAMS - BLACK - STEEL AND HM (STL P1) DOOR/FRAMES. FINAL COLOR OF CONTAINERS TBD
STOREFRONT COLORS	S1 - BLACK ANODIZED ALUMINUM
WOOD SIDING	W1 - RECLAIMED WOOD SEALED WITH PENETRATING WOOD SEALER
STEEL SHIPPING CONTAINER	STL - ALL EXPOSED STRUCTURAL STEEL ELEMENTS AND SHIPPING CONTAINER TO BE PAINTED COLOR TBD
GYPSUM WALL BOARD	GWB - CEILINGS, WALLS ETC- PAINTED P1
METAL COPING AND FLASHINGS	COLORS ARE TO MATCH ADJACENT SURFACES
STEEL CONTAINERS	ALL CONTAINERS ARE TO BE PRIMED AND FINAL PAINTED WITH INDUSTRIAL GRADE EPOXY PAINT - COLORS TBD - 3 COATS MIN OF FINAL COLOR. PRIOR TO PAINTING ALL CONTAINERS ARE TO BE CLEANED, SCRAPPED AND PREPPED FOR PRIMER AND FINAL COATS.

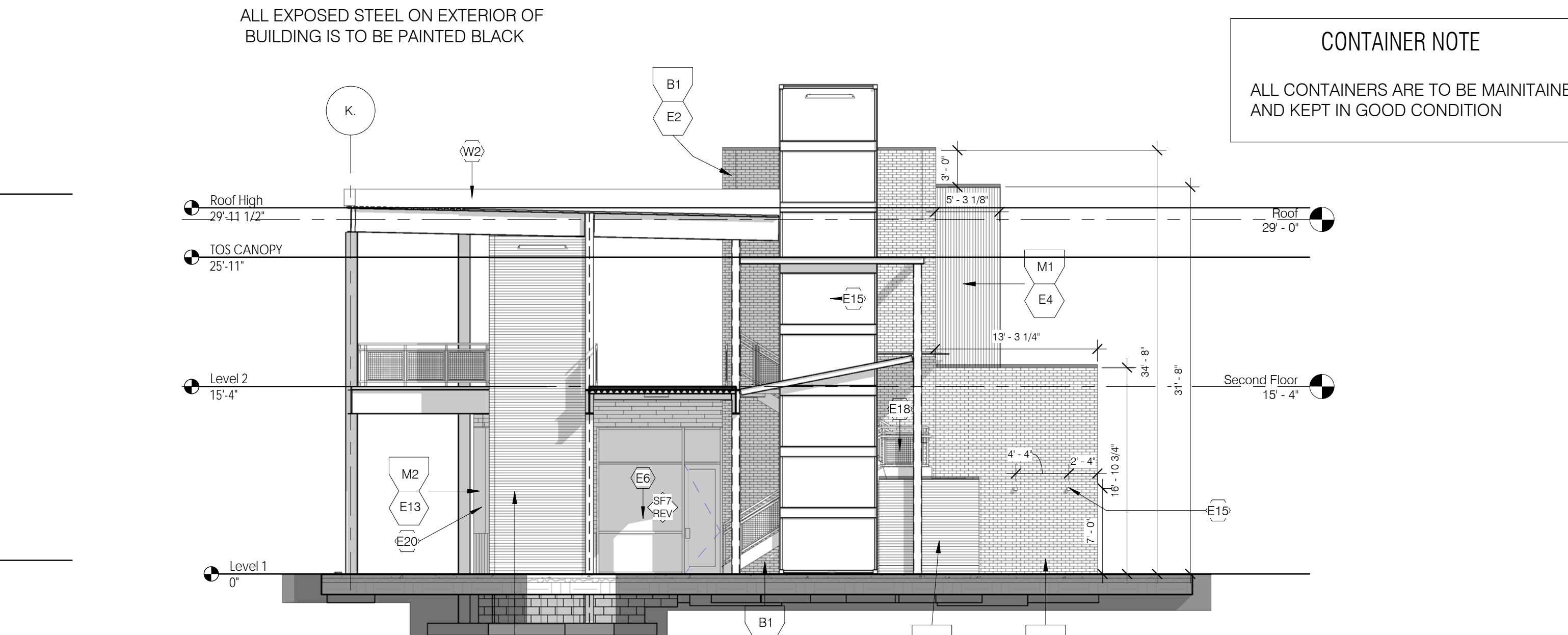
- SEE SHEET A11.0 FOR CONTAINER INFORMATION
- NO BRICK CORE HOLES SHALL BE EXPOSED. TYP. CLOSURE (SOLID CORE) BRICK SHALL BE USED WHERE CORE HOLES WOULD OTHERWISE BE EXPOSED TO THE ELEMENTS.
 - EXPOSED STEEL UNITS AND BREAK METAL TO BE PAINTED TO MATCH ADJACENT SURFACE UNLESS OTHERWISE NOTED, TYP.
 - ALL EXTERIOR GWB CEILINGS TO BE PAINTED TO MATCH 'P', UNLESS OTHERWISE NOTED.
 - PROVIDE SOLID BLOCKING WITHIN WALL CAVITY SEGMENTS BEHIND ALL EXTERIOR LIGHTS AND SIGNAGE.
 - FACE OF SLAB SHALL NOT BE EXPOSED AT SLOPED EXTERIOR PAVING CONDITIONS. COORDINATE EXT. PAVING CONDITIONS WITH CIVIL PACKAGE, TYP.
 - EXTERIOR PAVING SHALL NOT HAVE A FINISHED ELEVATION HIGHER THAN THE SILL HEIGHT AT AN ADJACENT STOREFRONT OR HOLLOW METAL DOOR LOCATION.
 - ALL CAULKING IS TO MATCH ADJACENT SURFACES U.O.N.



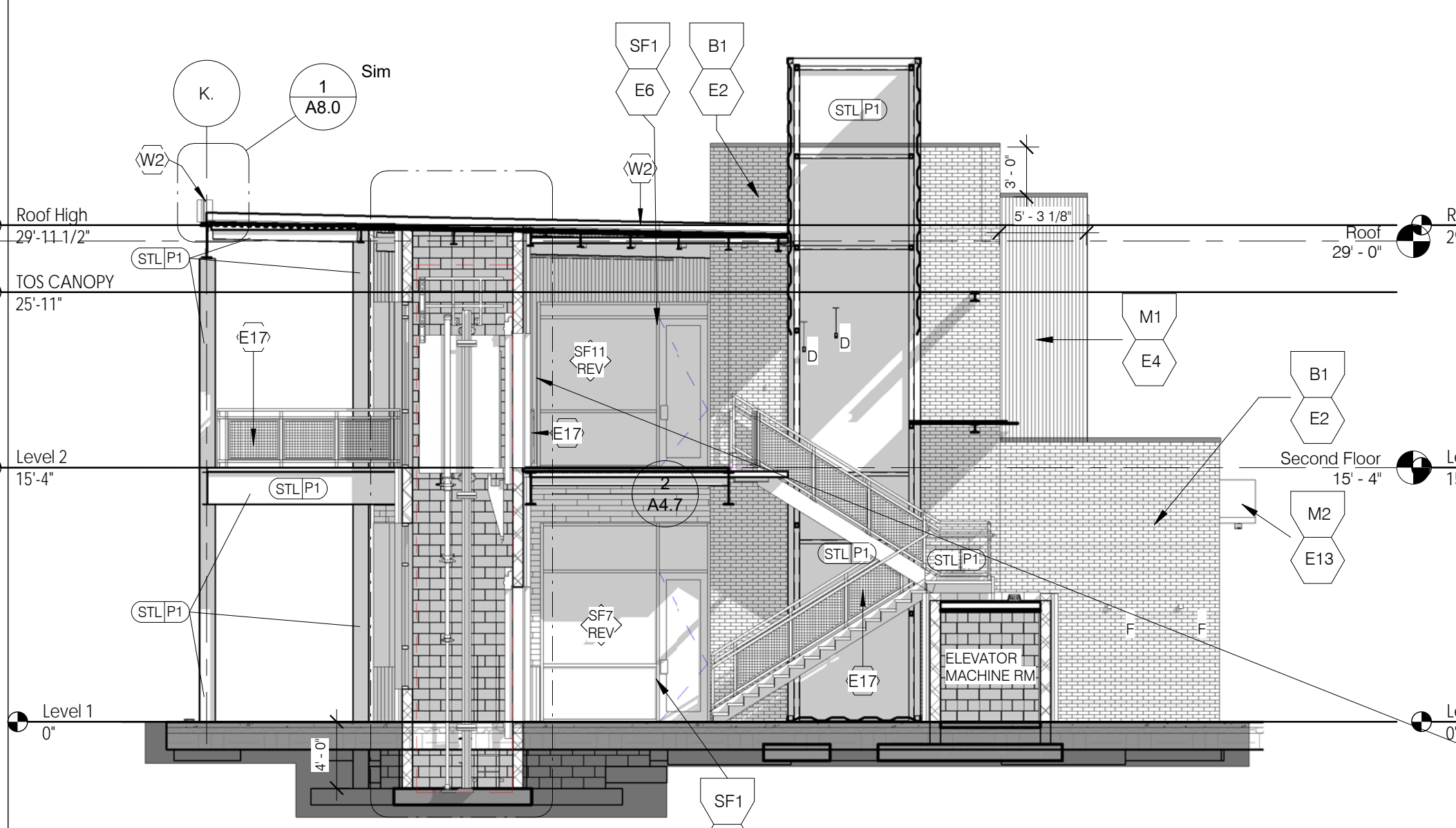
WEST ELEVATION
 1/8" = 1'-0" 1



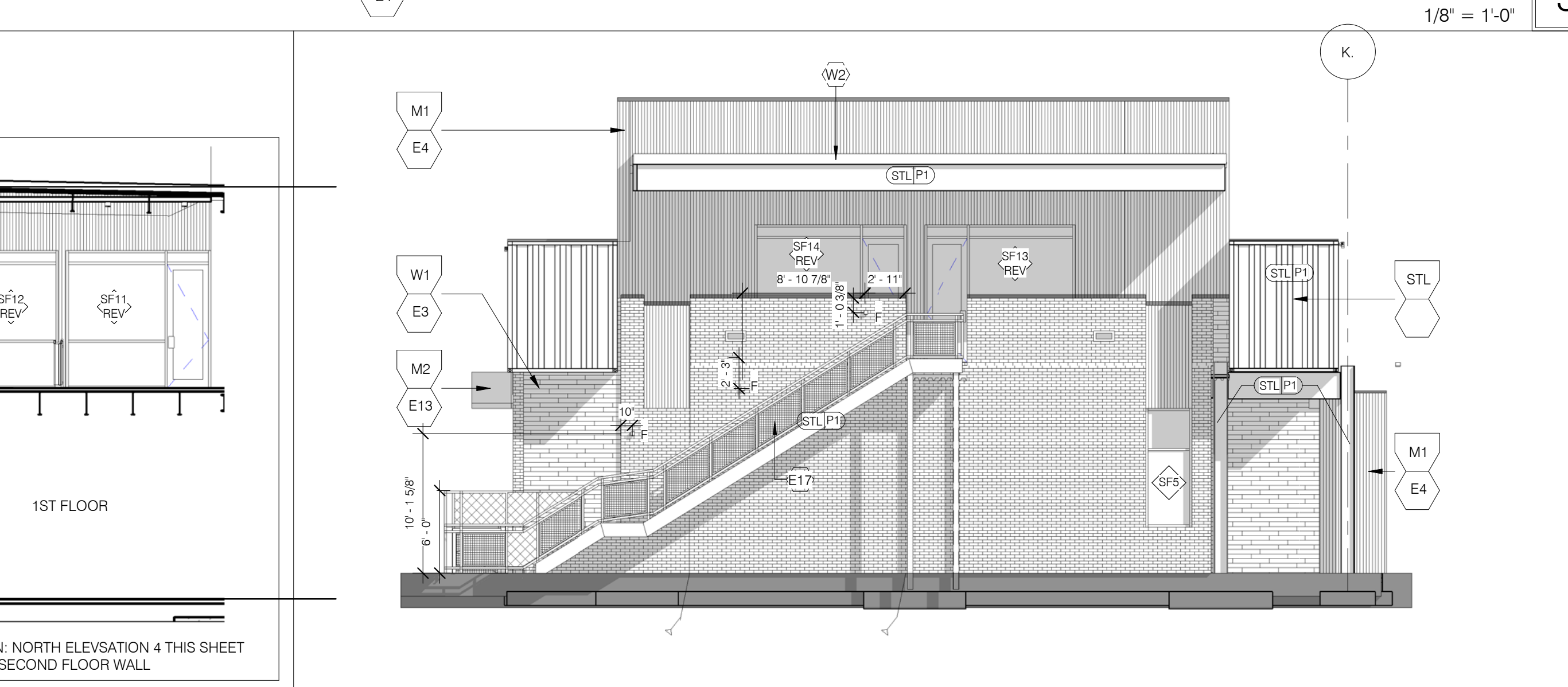
NORTH ELEVATION
 1/8" = 1'-0" 2



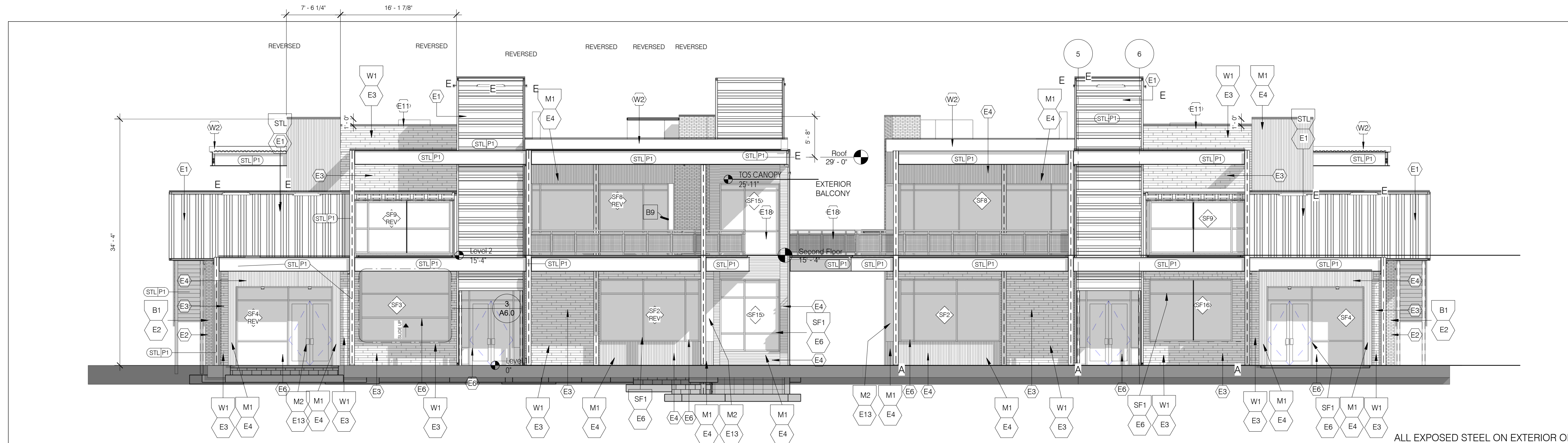
NORTH ELEVATION
 1/8" = 1'-0" 3



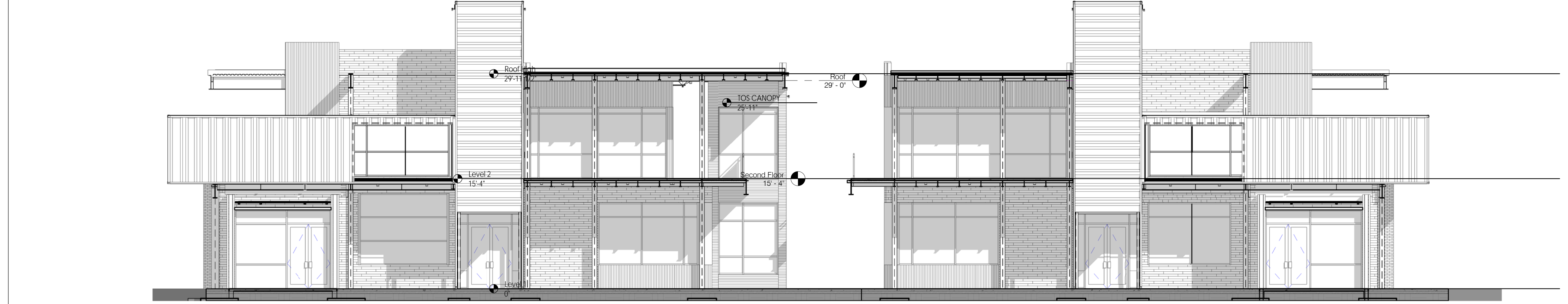
NORTH ELEVATION
 1/8" = 1'-0" 4



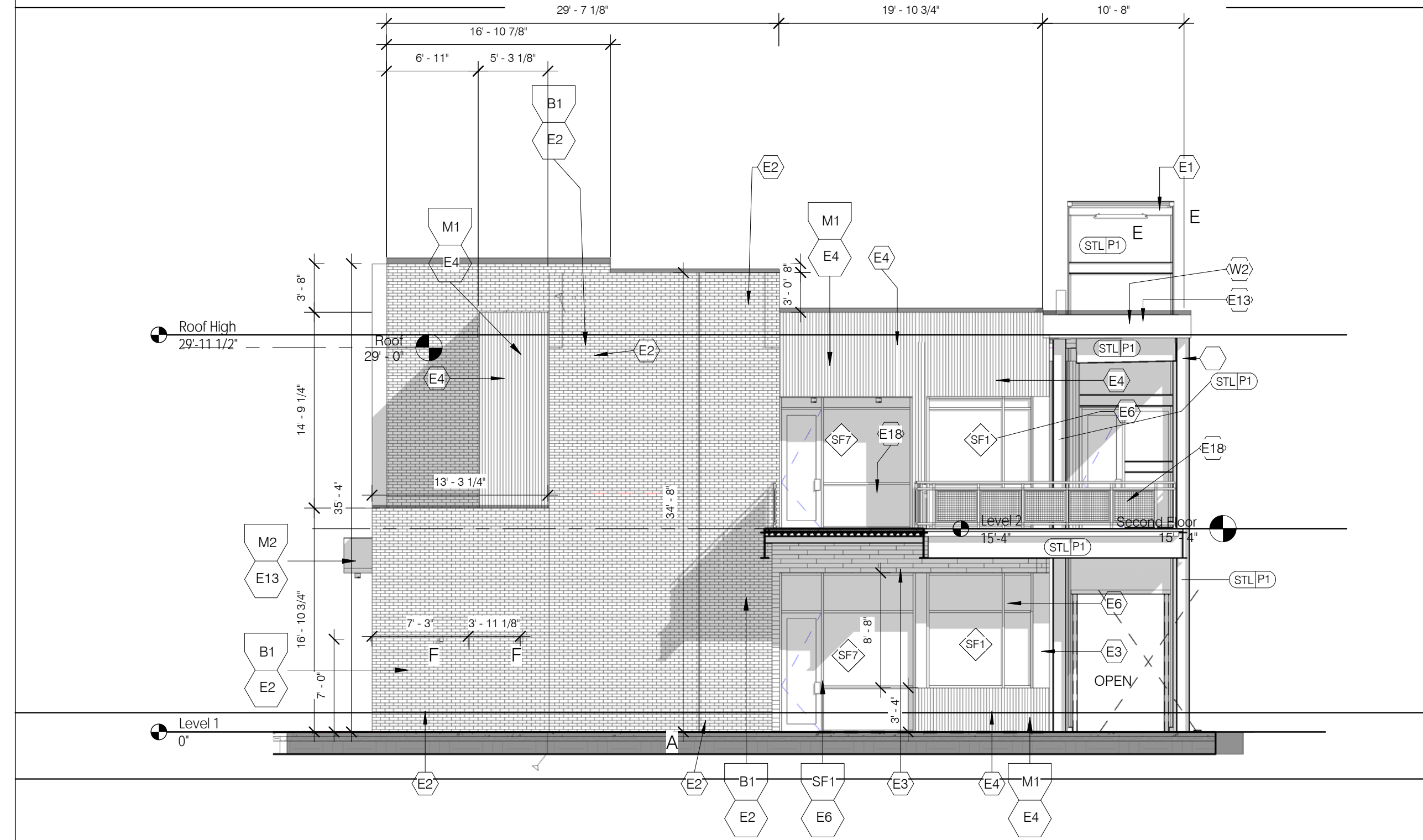
SOUTH ELEVATION
 1/8" = 1'-0" 5



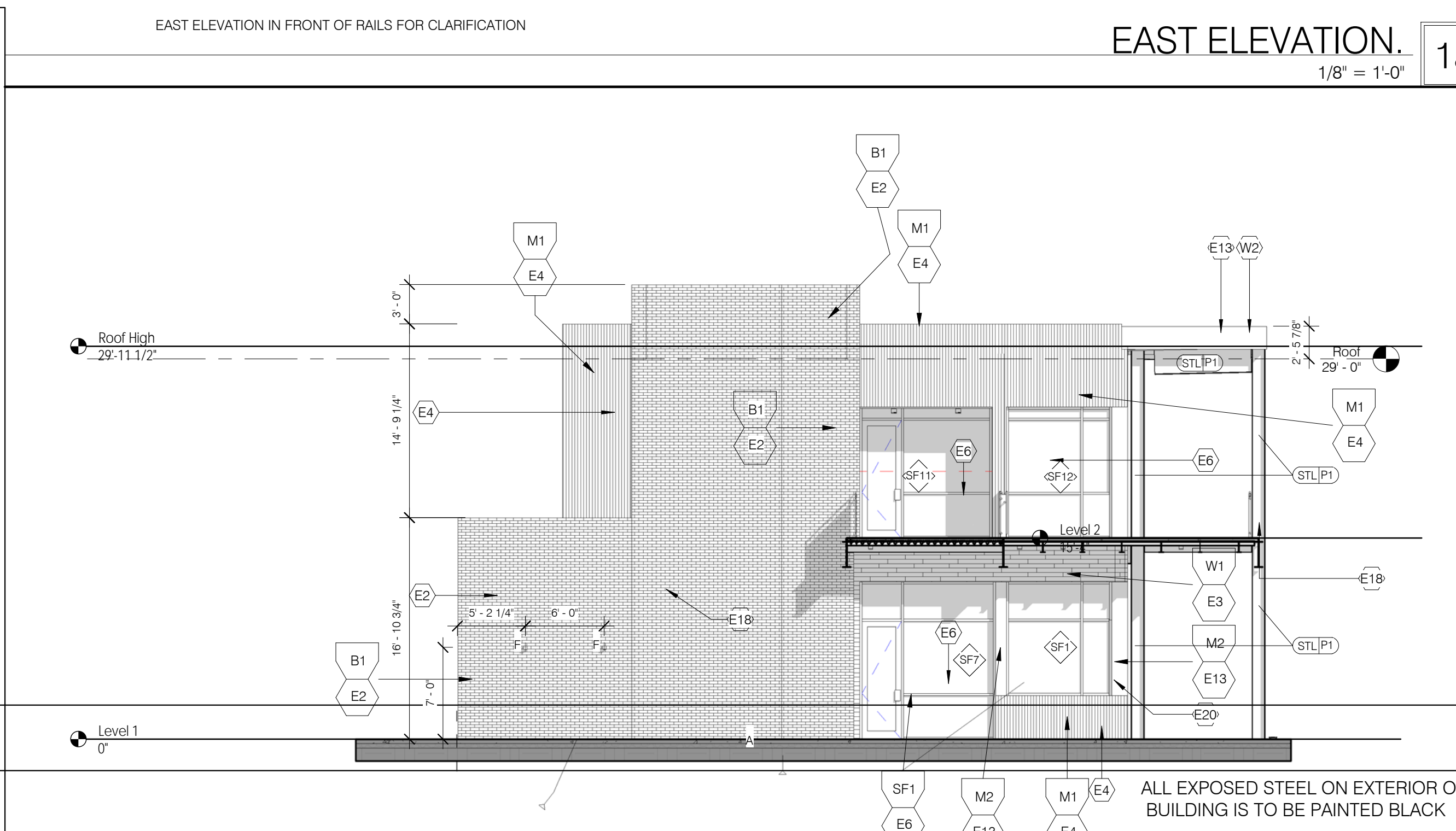
EAST ELEVATION 1
1/8" = 1'-0"



EAST ELEVATION 1a
1/8" = 1'-0"



SOUTH ELEVATION 2
1/8" = 1'-0"



SOUTH ELEVATION 3
1/8" = 1'-0"

KEYNOTE LEGEND	
KEY VALUE	KEYNOTE TEXT
E1	STEEL CONTAINER EXTERIOR
E2	BRICK VENEER
E3	RECLAIMED WOOD SIDING
E4	CORRUGATED METAL WALL PANEL A7.2 STANDARD DETAILS-RUN HORIZONTAL AT ELEVATOR WALLS AND ELEVATOR MACHINE ROOM
E6	BLACK ANODIZED ALUMINUM STOREFRONT
E11	ROOF TOP EQUIPMENT BEYOND
E13	METAL PANEL
E18	STEEL GUARD-HANDRAIL WITH STEEL WIRE FABRIC INFILL SEE DETAILS ON A7.1
E20	BLACK ALUMINUM OUTSIDE CORNER TO MATCH STOREFRONT ALUMINUM AND COLOR
W2	METAL FLAT/SMOOTH PANEL PER SCHEDULE A7.2 FOR DETAILS

SEE SHEET A11.0 FOR CONTAINER INFORMATION

CONTAINER NOTE
ALL CONTAINERS ARE TO BE MAINTAINED AND KEPT IN GOOD CONDITION

GENERAL LEGEND	
	EXPANSION JOINT IN WALL 3/8" NEOPRENE AND CAULK FULL HEIGHT
	WINDOW TYPE: ELEVATIONS A2.0 & A2.1 FOR CALL OUTS - SEE A6.0 FOR DETAILS

EXTERIOR LIGHT FIXTURE SCHEDULE	
'A'	LUMENBEAM - W/6 DEG MOUNT IN CONCRETE AT GRADE. MANUFACTURER LUMENPULSE
'B'	BEGA 6977 7.9 W LED
'C'	BEGA 44.439 21.1 w led 24: SURFACE MOUNTED DOWNLIGHT LINEAR BLACK
'D'	WAC LIGHTING PD-W2605 BK
'E'	LUMENFACADE - BY LUMENPULSE LOG/120/36/30K/10X6Q/WAM2/BK
'F'	WAC LIGHTING WS-W2505 B2 RUBIX WALL MOUNT

INTERIOR LIGHTING TO BE INSTALLED AT TIME OF FUTURE FIT-UPS

MATERIALS / EXTERIOR FINISHES	
BRICK	B1 - MODULAR - RECLAIMED TUMBLED- MORTAR TO MATCH BRICK COLOR
METAL COLORS	M1 - GREY CORRUGATED METAL M2 - FLAT/SMOOTH METAL PANEL - COLOR TBD
PAINT COLORS	SHERWIN WILLIAMS - BLACK - STEEL AND HM (STL P1) P1 - DOOR/FRAMES - FINAL COLOR OF CONTAINERS TBD
STOREFRONT COLORS	S1 - BLACK ANODIZED ALUMINUM
WOOD SIDING	W1 - RECLAIMED WOOD SEALED WITH PENETRATING WOOD SEALER
STEEL SHIPPING CONTAINER	STL - ALL EXPOSED STRUCTURAL STEEL ELEMENTS, AND SHIPPING CONTAINER TO BE PAINTED COLOR TBD
GYPSON WALL BOARD	GWB - CEILINGS, WALLS ETC- PAINTED P1
METAL COPING AND FLASHINGS	COLORS ARE TO MATCH ADJACENT SURFACES
STEEL CONTAINERS	ALL CONTAINERS ARE TO BE PRIMED AND FINAL PAINTED WITH INDUSTRIAL GRADE EPOXY PAINT - COLORS TBO - 3 COATS MIN OF FINAL COLOR. PRIOR TO PAINTING ALL CONTAINERS ARE TO BE CLEANED, SCRAPPED AND PREPPED FOR PRIMER AND FINAL COATS.

- NO BRICK CORE HOLES SHALL BE EXPOSED. TYP. CLOSURE (SOLID CORE) BRICK SHALL BE USED WHERE CORE HOLES WOULD OTHERWISE BE EXPOSED TO THE ELEMENTS.
- EXPOSED STEEL UNTELS AND BREAK METAL TO BE PAINTED TO MATCH ADJACENT SURFACE UNLESS OTHERWISE NOTED. TYP.
- ALL EXTERIOR GWB CEILINGS TO BE PAINTED TO MATCH P1 UNLESS OTHERWISE NOTED.
- PROVIDE SOLID BLOCKING WITHIN WALL CAVITY SEGMENTS BEHIND ALL EXTERIOR LIGHTS AND SIGNAGE.
- FACE OF SLAB SHALL NOT BE EXPOSED AT SLOPED EXTERIOR PAVING CONDITIONS. COORDINATE EXT. PAVING CONDITIONS WITH CIVIL PACKAGE. TYP.
- EXTERIOR PAVING SHALL NOT HAVE A FINISHED ELEVATION HIGHER THAN THE SILL HEIGHT AT AN ADJACENT STOREFRONT OR HOLLOW METAL DOOR LOCATION.
- ALL CAULKING IS TO MATCH ADJACENT SURFACES U.O.N.

